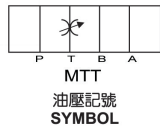
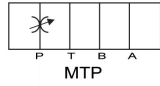




G-11 疊加型流量閥

Modular Throttle Valves

MTP, MTT系列



選購指南 HOW TO ORDER

MS	P	-03	-X
系列編號 SERIES NUMBER MT MS	作動形式 ACTION PORT A: A孔 A PORT B: B孔 B PORT P: P孔 P PORT T: T孔 T PORT W: A.B孔 A.B PORT	通徑 VALVE SIZE 02 03 04 06	控制方式 CONTROL TYPE X: METER OUT 回油路節流 Y: METER IN 進油路節流

※ MS, MT系列: A口時把手在A側(左側)
B、P口時把手在B側(右側)

性能表 SPECIFICATION

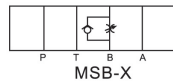
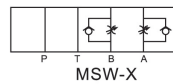
型號 MODEL	最高使用壓力 MAX. OPERATING PRESSURE (kgf/cm ²)	最大流量 MAX. FLOW (l/min)	重量 WEIGHT
MSP-02 MTP-02 MTT-02	250	40	1.1
MSA-02 MSB-02 MSW-02		40	1.1 1.3
MSP-03 MTP-03 MTT-03		80	2.4
MSA-03 MSB-03 MSW-03		80	2.6 2.8
MSA-04 MSB-04 MSW-04		200	5.5 5.8
MSA-06 MSB-06 MSW-06		300	11.6 12.2

G-12 疊加型單向節流閥

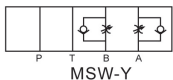
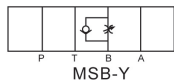
Modular Throttle (Check)

MSA, MSB, MSW

MSP系列



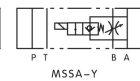
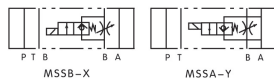
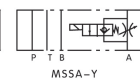
油壓記號
SYMBOL



G-13 疊加式電控單向節流閥

Modular Solenoid Control Throttle Vales

MSS



油壓記號
SYMBOL

選購指南 HOW TO ORDER

MSS	A	-03	-X	-D24	-NO
系列編號 SERIES NUMBER MSS	控制油路 ACTION PORT A: A孔 A PORT B: B孔 B PORT	通徑 VALVE SIZE 02 03	控制形式 ACTION PORT X: 出口流量控制 X: METER OUT Y: 進口流量控制 Y: METER IN	線圈型式 COIL TYPE D12: 12VDC D24: 24VDC A15: 110V/50HZ A25: 220V/50HZ	控制形式 CONTROL TYPE NO: 常開式 NC: 常閉式 NO: NORMAL OPEN NC: NORMAL CLOSE

性能表 SPECIFICATION

型號 MODEL	額定壓力 RATED PRESSURE (kgf/cm ²)	最大流量 MAX. FLOW (l/min)
MSSA-02	250	20
MSSB-02		45
MSSA-03		
MSSB-03		